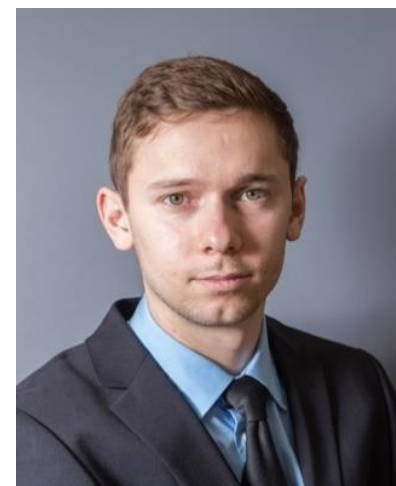


ENERGIE AGENTUR STEIERMARK

//

ENERGY AGENCY STYRIA

Competence in energy



Rafael Bramreiter, MSc

22.10.2021

Agenda

The Austria Climate and Energy Model region (KEM) Approach

- Brief presentation of the Energy Agency Styria
- Presentation of the Austrian "Climate and Energy Model Region" approach
- Questions and discussion



Together we are shaping an energy-conscious future!



The Energy Agency Styria views itself as a **service provider** for **meeting the challenges** in the fields of **energy efficiency** and **future-oriented energy supply**. Our work supports the **implementation of the energy strategy of the province of Styria** in **cooperation with municipalities, citizens and industry**.

Klima- und Energiemodellregionen (KEM)

The Austria Climate and Energy Model region (KEM) Approach

- Climate and energy model regions
 - Promoted by a unique climate and energy model region manager
 - Targets
 - Optimal use of natural resources
 - Exploitation of energy saving potentials
 - Sustainable management in the regions
- The program is funded by the Austrian Climate & Energy Fonds
- **Key Facts (2021)**
 - Program start was 2009
 - 950 municipalities with 2.7 million inhabitants (current)
 - 5,410 implemented projects and measures (total)



Klima- und Energie-
Modellregionen
Wir gestalten die Energiewende



Leitfaden
Klima- und Energie-
Modellregionen

Jahresprogramm 2021

Ein Programm des Klima- und Energiefonds
der österreichischen Bundesregierung

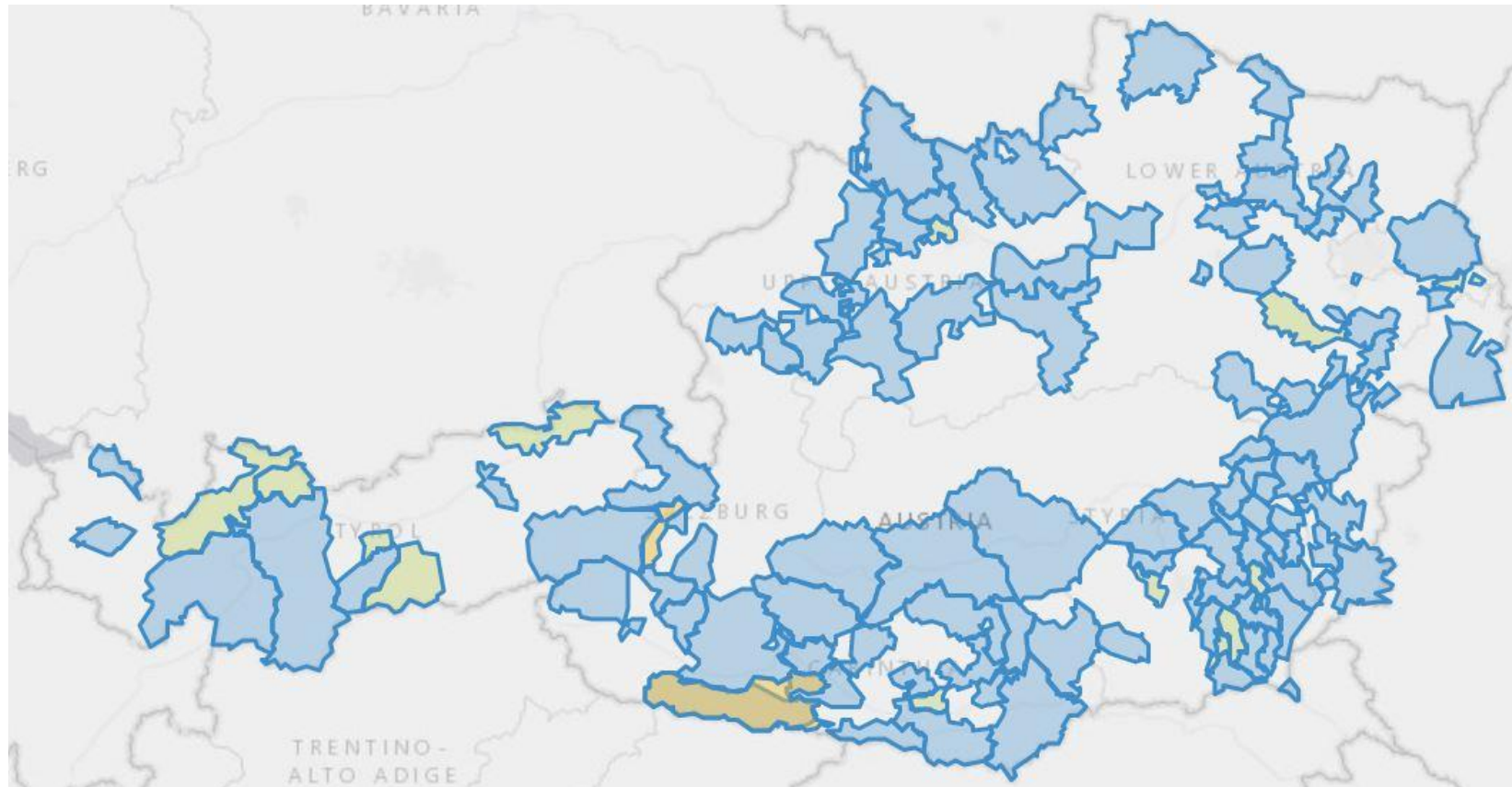


Wien, Mai 2021

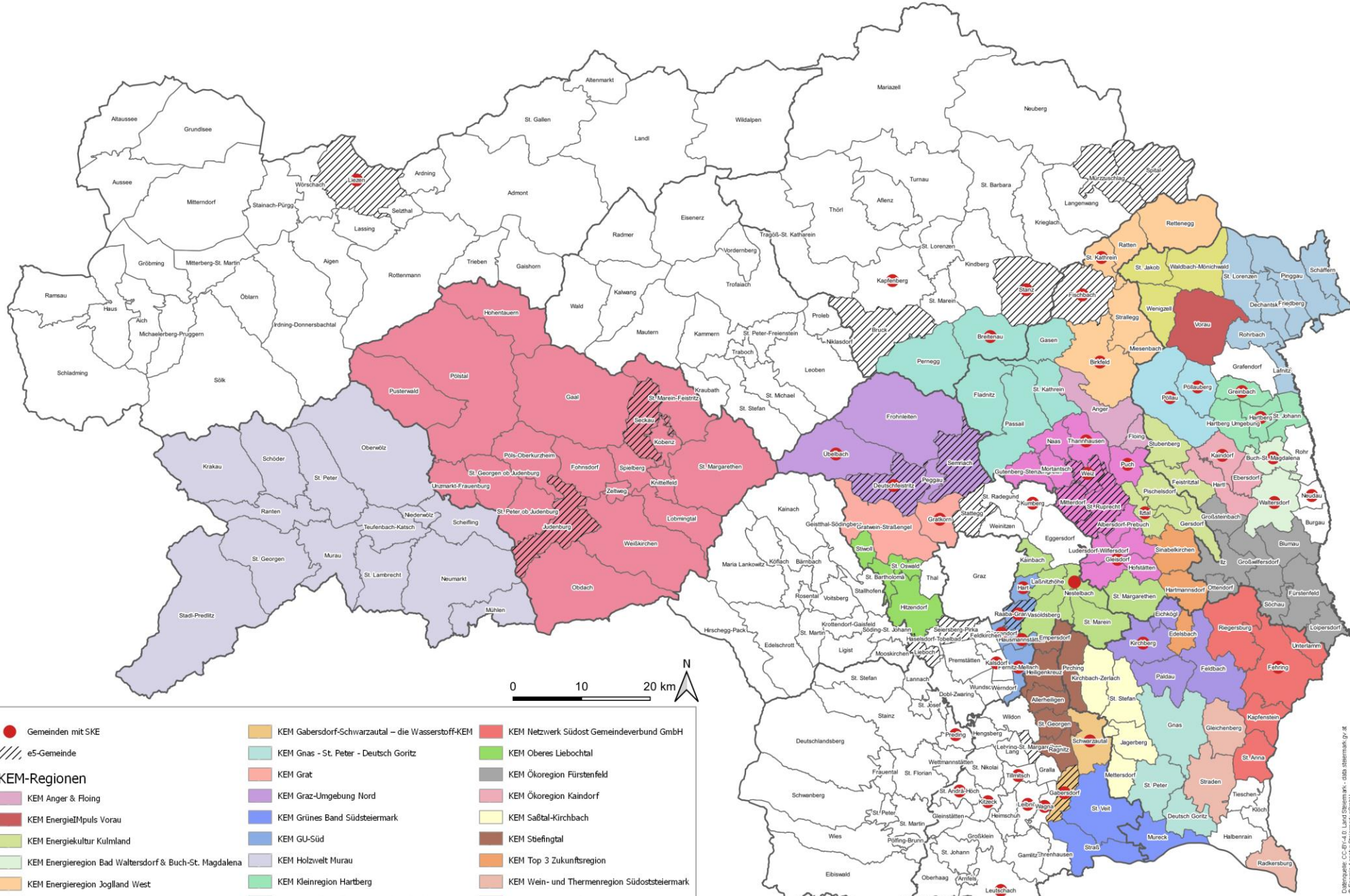
105 climate and energy model regions as of January 2021

The Austria Climate and Energy Model region (KEM) Approach

● New KEM ● Existing KEM ● Focus region



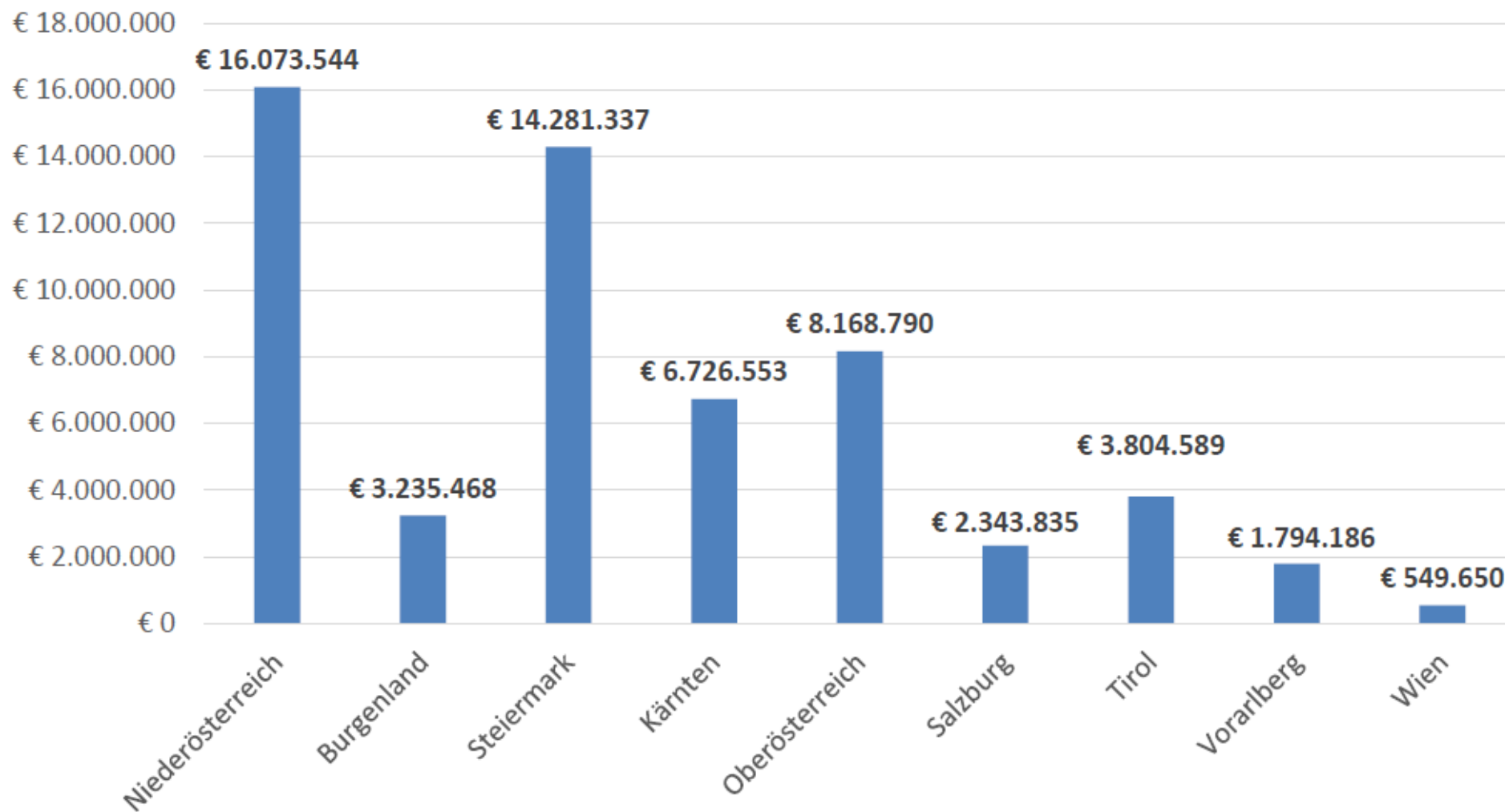
29 / 105
climate and
energy model
regions
are located in
Styria



Gemeinden mit SKE	KEM Gabsdorf-Schwarzautal – die Wasserstoff-KEM	KEM Netzwerk Südost Gemeindeverbund GmbH
e5-Gemeinde	KEM Gnas - St. Peter - Deutsch Goritz	KEM Oberes Liebochtal
KEM-Regionen	KEM Grat	KEM Ökoregion Fürstenfeld
KEM Anger & Floing	KEM Graz-Umgebung Nord	KEM Ökoregion Kaindorf
KEM EnergieImpuls Vorau	KEM Grünes Band Südsteiermark	KEM Saßtal-Kirchbach
KEM Energiekultur Kulmland	KEM GU-Süd	KEM Stiefingtal
KEM Energieregion Bad Waltersdorf & Buch-St. Magdalena	KEM Holzwelt Murau	KEM Top 3 Zukunftsregion
KEM Energieregion Joglland West	KEM Kleinregion Hartberg	KEM Wein- und Thermenregion Südsteiermark
KEM Energieregion Wechselland	KEM Klimafreundlicher Naturpark Almenland	KEM Weiz-Gleisdorf
KEM Erholungsregion Joglland	KEM Murtal	KEM Wirtschaftsregion mittleres Raabtal
KEM Erlebnisregion Hügelland	KEM Naturpark Pöllauer Tal	

Datenquelle: CC-BY-4.0: Land Steiermark - das.steiermark.gv.at
 © Energie-Agentur Steiermark gmbh
 2021 (aktuell)

Total climate fund resources by province



The path to a new KEM

The Austria Climate and Energy Model region (KEM) Approach

- Start of tender: annually end of April / beginning of May
- At least 2 municipalities must submit
- Legal basis is a PPP (public-public partnership)
- Minimum 3,000 and maximum 60,000 inhabitants
- **Awareness raising (*not Investment*) program**
- Deadline for submission: mid-October / this year next Monday

The path to a new KEM

The Austria Climate and Energy Model region (KEM) Approach

- Jury decision on participation at the end of the year
- This is followed by the **preparation of the implementation concept** (guidelines, Annex 1).
- At least 10 and max. 15 concrete measures must be defined
- Selection of **5 indicators**

Year 0

- *Submission without concept*
- *Obligatory preliminary discussion*



1st Year

- Development of an implementation concept
- *Submission with concept*

Year 2-3

- Implementation of at least 10 concrete measures
- *Submission for follow-up incl. new projects*
- *Audit & KEM Quality Management*

After 3rd Year

- Follow-up with at least 10 concrete measures (possible several times)
- *Audit & KEM Quality Management*

Financial aspects of the planned KEM

The Austria Climate and Energy Model region (KEM) Approach

Punkte nach Gemeindezahl			Punkte nach Einwohner*innenzahl		
KEM mit 2–5 Gemeinden	KEM mit 6–15 Gemeinden	KEM mit > 15 Gemeinden	KEM mit 3.000–15.000 EW	KEM mit 15.001–30.000 EW	KEM mit > 30.000 EW
1	2	3	1	2	3

Konzept- und Umsetzungsphase					
Gesamtpunkte	max. Höhe Konzeptunterstützung Klima- und Energiefonds	min. Kofinanzierungsmittel an den Konzeptkosten durch KEM in %	max. Höhe Umsetzungsunterstützungskosten Klima- und Energiefonds	min. Kofinanzierungsmittel an den Umsetzungs-kosten durch KEM in %	max. gesamte Klima- und Energiefonds-Unterstützung
2	€ 22.000	25 %	€ 110.000	25 %	€ 132.000
3	€ 22.000	25 %	€ 115.000	25 %	€ 137.000
4	€ 22.000	25 %	€ 121.000	25 %	€ 143.000
5	€ 27.000	25 %	€ 126.000	25 %	€ 153.000
6	€ 27.000	25 %	€ 132.000	25 %	€ 159.000

Advantages & special funding opportunities

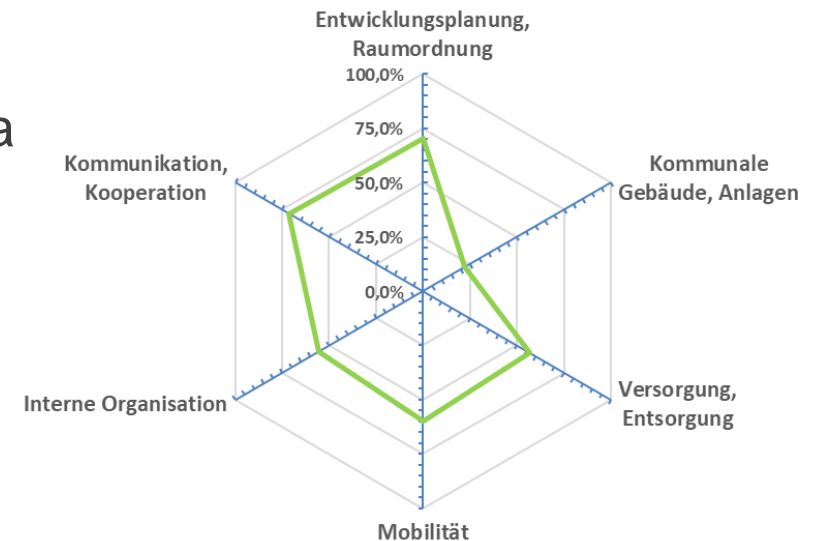
The Austria Climate and Energy Model region (KEM) Approach

- As discussed before:
 - **Secured budget for KEM municipalities**
 - **Increased subsidies** for municipalities (mostly) based on operational subsidies (KPC)
- Subsidies for public buildings/objects in the areas of
 - Photovoltaic systems
 - Wood heating systems
 - Solar thermal systems
 - E-charging infrastructure
 - model renovations
 - Large-scale solar systems and
 - thermal storage for heat and cold
- Lead projects

KEM-QM - Quality Management

The Austria Climate and Energy Model region (KEM) Approach

- **KEM-QM supervises and supports** the KEM-Manager in his/her work
- Preparation of an **initial assessment** (actual analysis) incl. data preparation and ongoing advice according to the EEA method
- **Quality management** in 6 fields of action at the municipal level
- Support in the preparation of the audit and presentation of the audit result
- **Audit result serves as a basis** for possible measures in the course of continuation



Questions and discussion



VIELEN DANK FÜR IHRE AUFMERKSAMKEIT!

Rafael Bramreiter, MSc

Energie Agentur Steiermark gGmbH

Nikolaiplatz 4a

A-8020 Graz

rafael.bramreiter@ea-stmk.at

T: +43 (0) 316 269 700 15

www.ea-stmk.at